

## 33 The Street, Corton, Suffolk, NR32 5HW

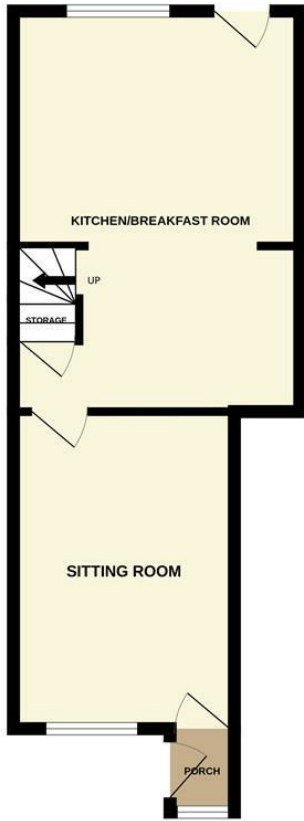
\*Available May 2025\*\*\*Fully furnished, Bills Included\*\* Nestled in the heart of Corton, this charming 19th-century fisherman's cottage offers the perfect retreat for families on holiday or workers seeking serviced accommodation. Spanning three floors, the property features 2 well-appointed bedrooms, a cosy sitting room, and a stunning open-plan kitchen/breakfast room equipped with all essentials for your stay.

Moments from Corton's beautiful sandy beach, this cottage boasts a gorgeous west-facing garden designed for entertaining, complete with a patio, outdoor kitchen, smokehouse, bar area, and summer house. Presented to an exceptionally high standard, the property also benefits from off-road parking, making it a convenient and stylish choice for your next getaway. \*\* EXTERNAL IMAGES COMING SOON \*\*

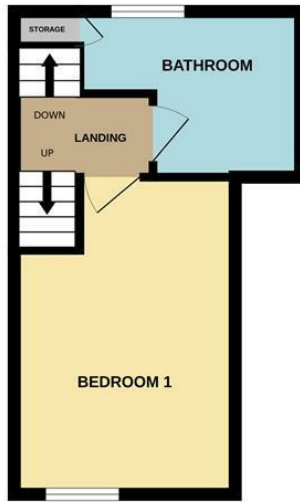
- Holiday/ serviced accommodation cottage set the heart of Corton
- 2 bedrooms set over 3 floors
- 19 century fisherman's cottage
- Gorgeous rear garden perfect for entertaining
- Presented to an extremely high standard
- Perfect for families
- Moments from the stunning Corton beach
- Open-plan kitchen/ breakfast room
- Fully equipped with essentials for your stay
- Off road parking

**£2,000 Per Calendar Month**

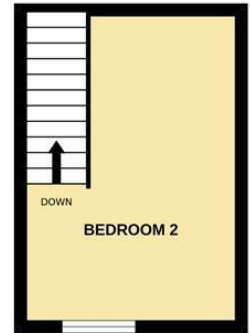
GROUND FLOOR



1ST FLOOR



2ND FLOOR



Whilst every attempt has been made to ensure the accuracy of the floorplan contained here, measurements of doors, windows, rooms and any other items are approximate and no responsibility is taken for any error, omission or mis-statement. This plan is for illustrative purposes only and should be used as such by any prospective purchaser. The services, systems and appliances shown have not been tested and no guarantee as to their operability or efficiency can be given.  
Made with Metropix ©2025

Energy Efficiency Rating		
	Current	Potential
<i>Very energy efficient - lower running costs</i>		
(92 plus) <b>A</b>		
(81-91) <b>B</b>		
(69-80) <b>C</b>		
(55-68) <b>D</b>		
(39-54) <b>E</b>		
(21-38) <b>F</b>		
(1-20) <b>G</b>		
<i>Not energy efficient - higher running costs</i>		
<b>England &amp; Wales</b>	EU Directive 2002/91/EC	